



**PUI**  
Positioning Universal

# HT8000MW

## ADVANCED RUGGED TELEMATICS GATEWAY

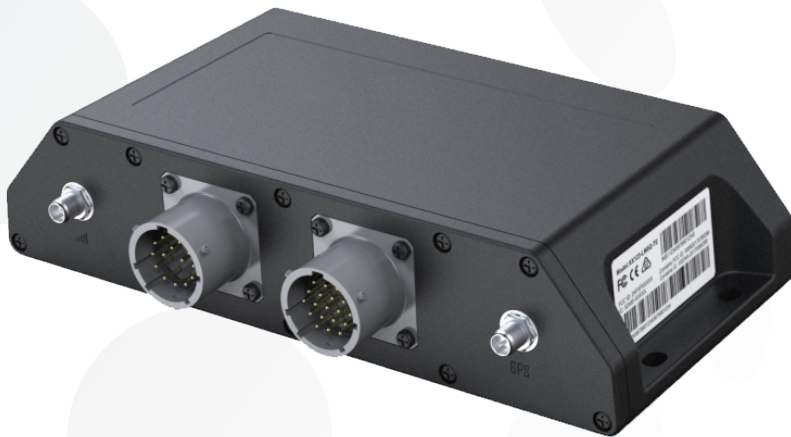
*Built for both light and heavy-duty vehicles, the HT8000MW is a feature-rich tracking solution, with a robust device management system that is easily scalable to millions of devices. Its rugged design is IP67-international standard compliant for protection against intrusion of dust, humidity, and water, allowing full functionality under all environmental conditions.*

### KEY FEATURES

- Powerful, scalable, cloud-based device management with Open API
- CAN interface supports light-duty and heavy-duty vehicles
- Advanced virtual ignition detection system
- Integrated LTE Cat M1 cellular with 2G fallback
- Wi-Fi client & v5.2 Bluetooth Low Energy
- Accurate odometer based on GPS, wheel speed and ECU
- High-capacity embedded battery ensures data collection and retention, for an extended period after external power removal

### MARKET APPLICATIONS

- **Light and Heavy-Duty Vehicle Management**
- **Business Fleet Management**
- **Service Vans and Trucks**
- **Heavy-Duty Equipment**



## SPECIFICATIONS

### GLOBAL CELLULAR CONNECTIVITY

<b>CAT M1 FDD</b>	B1/B2/B3/B4/B5/B8/B12/B13/B18/ B19/B20/B25/B26/B27/B28/B66 B85
<b>2G</b>	GSM 850/900/1800/1900

### CASE

<b>DIMENSIONS</b>	182 x 87 x 42mm
<b>WEIGHT</b>	500g
<b>HOUSING</b>	Industrial grade Polycarbonate (PC) Ingress Protection (IP): 67 Crush Resistance

### ENVIRONMENT

<b>OPERATING TEMP</b>	Powered: -40° C to +70° C Battery: -20° C to +60° C Charging: -10° C to +45° C
	RoHS, Reach, SAEJ1455 [Thermal Shock (1*), Humidity (2*), Mechanical Vibrations, Mechanical shock, Electrostatic Discharge]
	(1*)(2*) Inside operating temperature range

### LOCAL AREA CONNECTIVITY

<b>Wi-Fi BLE</b>	802.11 b/g/n (2.4 GHz) Station & SoftAP (3*) 5.2 (Master, Slave, IE Data Packet Length)
	(3*) For telemetry & ELD applications

### BACKUP POWER

<b>BATTERY</b>	6.2Ah
----------------	-------

### CERTIFICATIONS

FCC, IC, CE, PTCRB, RCM

### LOCATION

GPS (multi-constellation)  
Assisted Acquisition: 2s (via Cloud)  
Acquisition Sensitivity: -160dBm (4\*)  
Tracking Sensitivity: -167 dBm (5\*)

(4\*)(5\*) Based on GPS chipset

### INTERNAL SENSORS

6-axis IMU, System temperature, Battery level

### INTERNAL ANTENNAS

Cellular Primary and Secondary, GPS, Bluetooth, W-Fi

### EXTERNAL CONNECTORS

External power and inputs/outputs:

- Cellular Primary
- GPS
- Power-In (6-48VDC)
- Power Out (2.5W)
- 1-Wire Technology (6\*)
- 2x ADC (48V) X 2
- 4x Digital Input
- 4x Digital Output
- Ignition Detection
- 1x CAN 2.0B (ISO-1575 or J1939)
- 2x RS-232
- J1708

(6\*) 1-Wire is a registered trademark of Maxim Integrated Products, Inc.

### USER INTERFACE

Power Button, 5x LEDs

### SECURITY

Secure boot, TLS/SSL

Specifications are subject to change. Please see your Positioning Universal contact for more details.